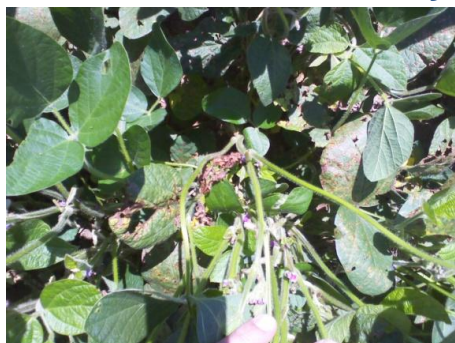


Field Trial Report

2011 Preliminary SEAREC Soybean Product Assessment



Site coordinators – Del Voight, John Bray, Alyssa Collins, and Greg Roth, Penn State Extension



FIELD INFORMATION

Field Name: X	Acres: 15	2010 Crop: Wheat/Soybeans	2011 Crop: Soybeans
Soil type: Duffield	Field Length: 800	Tillage: No till	Planting Date: 5/10/11
Soybean Variety: Pioneer 93M11	Seed Treatment: Trilex plus Gaucho	Inoculants: Optimize	Planting Depth: 1 inch
Planter/Drill and width: 10 foot 7 inch JD1250		Herbicide: Canopy+Round Up f/b Round Up f/b Arrow	
Sprayer/width: 20	Combine/width: 15	Yield Monitor: No	GPS capability: No
Guidance system: No	Design: Randomized Complete Block	3 reps	

TREATMENTS EVALUATED

- 1 Untreated (Trilex plus Gaucho)
- 2 Cobra at 6 oz/acre 1qt/a COC +2.5lb/a AMS V 6 V6 R1
- 3 Foliar Moly 5 oz/acre Post at V2
- 4 M power 1 pint per acre at planting

This study was designed to evaluate several potential alternative products to enhance soybean production. We were unable to document a significant yield response for any of the treatments in this trial.

RESULTS

Treatment	Yield	Moisture	Test Wt.
	Bu/ac	%	Lb/bu
1 Untreated	50.4	15.5	47.7
2 Cobra at 6 oz/acre 1qt/a	49.4	15.5	49.2
3 Post Moly 5 oz/acre	49.5	15.5	48.4
4 M power 1 pint per acre	48.5	15.4	48.0
Significant/ LSD(0.10)	NS	NS	0.9

Notes: Conditions were dry in Late July and August. Disease and insect pressure was low